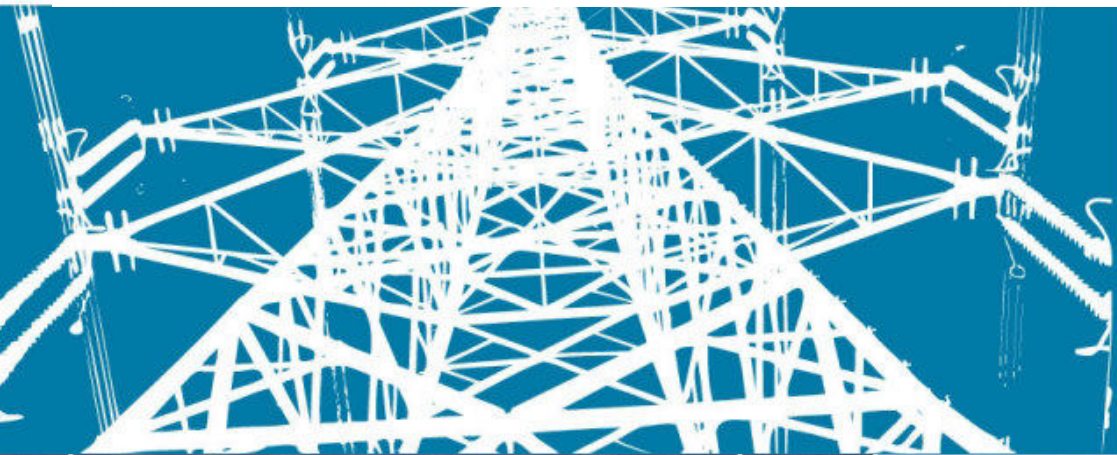


NEW

SecuControl[®]

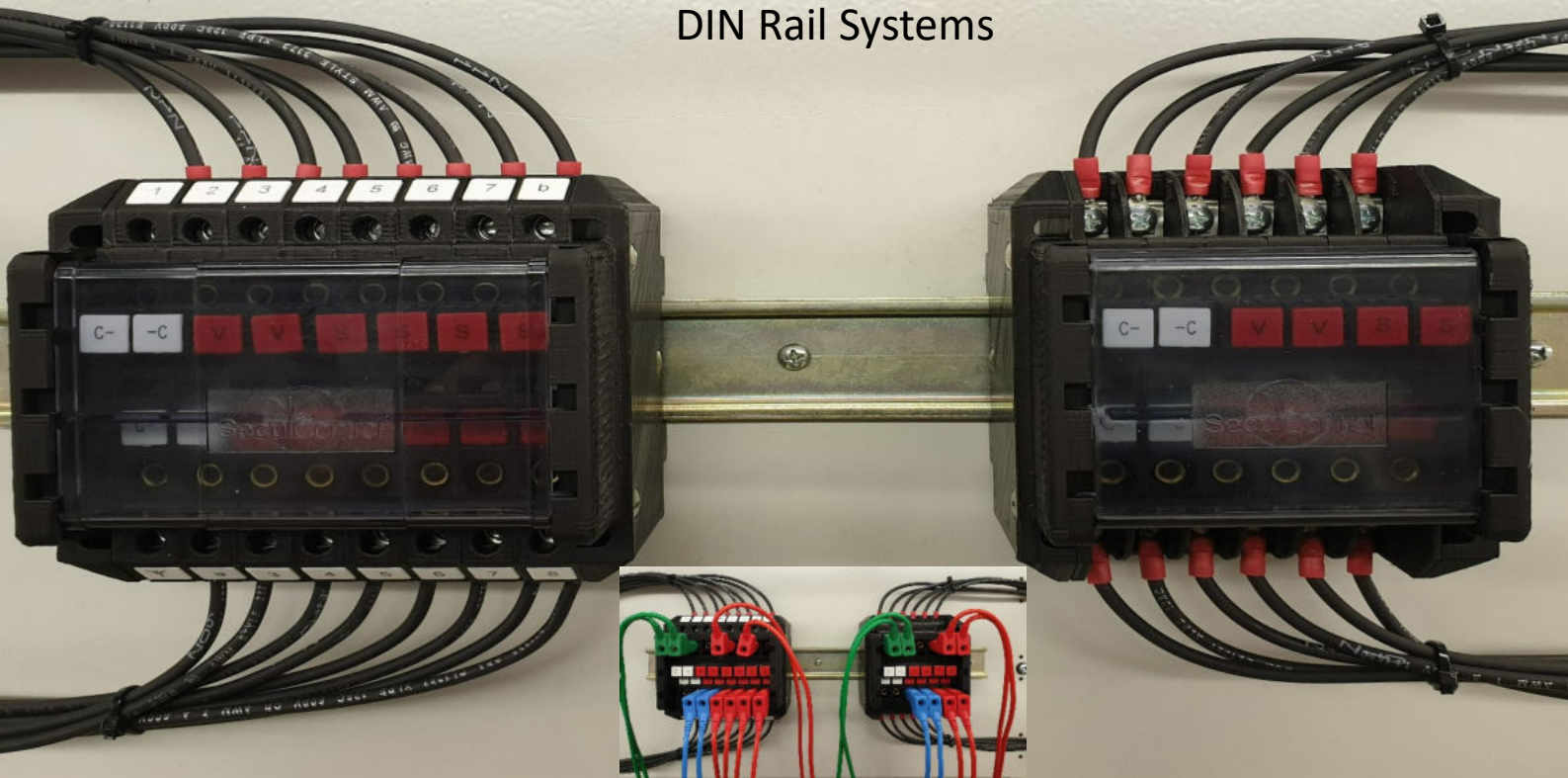
DRS DIN Rail Systems

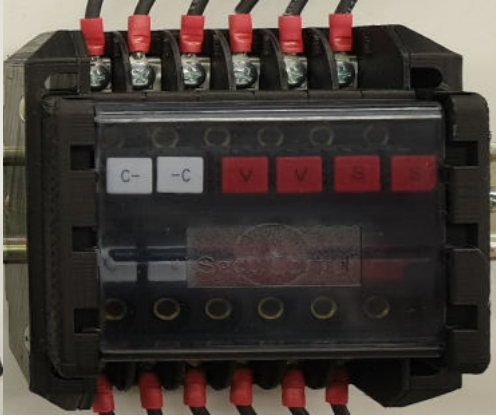


Testing Solutions
for
Electric Power



Plugless solution for
DIN Rail Systems





Key Features

- Finger-safe design increases safety
- In block parking positions keep pins safely stored
- Automatic make-before-break CT shorting upon CT disconnect pin insertion
- Integrated jacks for shielded banana plugs
- Slide on dust cover gives quick and easy access
- Internal or external screwing options for cabling
- Fits standard DIN Rails, ideal for retrofits

Principle of Operation

DRS in Normal Operation:

- Disconnect pins are parked safely in the top row.
- Double springs safely close the contact in the Test Block.

DRS in Test Position:

- Disconnect pins are inserted in the test block. Keying prevents mistakes.
- CTs are safely short-circuited
- Banana jacks provide easy test access.



Technical Specifications

Current withstand	30 A continuous 500 A for 1 Second
Maximum voltage	600 V
Contact resistance	$\leq 2\text{m}\Omega$
Dielectric withstand	3.kV RMS 1 minute between adjacent contact pairs and between any contact pair and other metal parts 3.0 kV RMS for 1 minute between open contacts when test pin is inserted
Voltage impulse	3 positive und 3 negative impulses of 5 kV peak, 1.2/50 μs , 0.5 J between adjacent contact pairs and between all contact pairs and other metal parts
UL94 flammability class	V-0
Enclosure protection	IP 50

SecuControl[®]

www.secucontrol.com

Europe

Secucontrol Produktions GmbH
Ascherslebener Str. 3
06333 Hettstedt, Germany
Tel.: +49 3573 80 99 048
E-Mail: info@secucontrol.com

North America

SecuControl, Inc.
4721 Eisenhower Avenue
Alexandria VA 22304, USA
Tel.: +1 703 838 7677
E-Mail: mail@secucontrol.com

South America

SecuBrasil Ltda
Rod. Jose Carlos Daux, 8600
88050-001 Florianopolis SC, Brazil
Tel.: +55 48 3371 1670
E-Mail: comercial@secubrasil.com